

# “Quote for the Day”

*“The genius, wit, and spirit of a nation are discovered by their proverbs.”*

- Francis Bacon



elcome, and thank you for trying *Quote for the Day*. This application will randomly select one quotation from a database of quotes and display it in a window on the screen. *Quote for the Day* can be configured to pick another random quotation at regular intervals, or it can minimize to an icon or close after a specified period. It can also find quotations based on a fragment of text that you give it, and can copy the currently shown quotation into the clipboard so that you can insert it into a word processor or other program. A simple menu controls all these operations.

You can install it to appear when you first load Windows, or you can launch it as you would any other application via the Program Manager or File Manager.

*Quote for the Day* is distributed as shareware. If you find this program useful and continue using past thirty days, you are requested to register the product.

Feel free to distribute this program among your friends, or on bulletin boards and on-line services. And by all means compile and distribute your own quotation databases, but *please observe the following requests:*



If you distribute *Quote for the Day*, keep everything intact: the program, the quotation database, the help file, and any other files that came along for the ride. No additions or subtractions, please.



Do not add or remove any quotations from the quotation database that you give to others; what you do with your own database is your business, but I ask that you give *Quote for the Day* it in it's original condition. (Additional quotes may be distributed separately, of course.)



No fee may be charged for *Quote for the Day*, except a charge for duplication and shipping of a disk containing the complete, unaltered package. Any fees charged must be identified clearly as not constituting registration.

Thank you. I hope that you find *Quote for the Day* as much of a fun and useful program as I do.



Thomas M. Tuerke

You are also invited to call Gravesend BBS at (707)-795-4939 (up to 2400 baud supported) if you have any questions about *Quote for the Day*. Registered users are entitled to special access and additional support through the BBS; this access is granted when callers identify themselves as registered users of *Quote for the Day*.



# Acknowledgements

*"If I have seen farther than others, it is because I have stood on the shoulders of giants."*

---

- Sir Isaac Newton

I would like to take a moment to thank everyone who has contributed to *Quote for the Day*, but a special thanks goes to the following people:

◆ Roy and Sigrid Marques, for being the first people to register *Quote for the Day*.

◆ The people at Adobe the GO ADOBE forum, for helping point out a stupid mistake on my part, fixing the ATM incompatibility.

◆ The many people who endured the beta tests of *Quote for the Day* 1.1, including Fred Erb and Howard Kalmer.

◆ The many callers to Gravesend, for making it such an enjoyable place to visit (even if I live there).

◆ And of course, my lovely wife Cynthia, who put up with my late nights and early mornings in front of the computer, both for this and the hundred other little projects.

# The Menu

“As to marriage or celibacy, let a man take the course he will.  
He will be sure to repent.”

---

- Socrates

<b>S</b> witch To...	Ctrl+Esc
<b>N</b> ew Quote	^N
<b>F</b> ind Quote...	^F
<b>C</b> opy Quote	Ctrl+Ins
<b>O</b> ptions...	^O
<b>A</b> bout Quote...	^A

The menu attached to *Quote for the Day*, in addition to the stock Windows options, contains the following:

- New Quote:** Randomly chooses a new quotation when selected. Click on this for a new quotation
- Find Quote:** Invokes the Find dialog, which can be used to find quotations based on some text contained in them.
- Copy Quote:** Copies the quotation into the clipboard, to be pasted in another application.
- Options:** Invokes the Options dialog, which is used to set various operating features of *Quote for the Day*.
- About:** Invokes the About dialog, giving version information.
- 

The other menu choices are provided by Windows, and perform their usual operations. See your Windows Users Manual on how to use these.

# The Quote File Format

*"If you hear a wise sentence or an apt phrase, commit it to your memory."*

---

- Sir Henry Sidney

The file that *Quote for the Day* uses is an ordinary text file. As such, it can be prepared and edited using any Windows text editor or word processor (in the latter case, make sure it doesn't insert formatting codes; *Quote for the Day* won't know what to make of them.)

Each quote in the database must be on its own 'line' which ends in a carriage return. That line can be any length up to 1023 characters (counting letters, spaces, and everything). A quotation consists of two parts, the body of text, and the name of the person the quotation is attributed to. *Quote for the Day* expects these to be separated by the three characters space-dash-space. For example

"Trapped, like a trap in a trap." - Dorothy Parker

---

In this case "Trapped, like a trap in a trap" is the quotation, and Dorothy Parker is the author. Anything that follows the author's name is also considered part of the name. This makes including biographical information easy. Surrounding the quotation in quotation marks is purely cosmetic, so they can be omitted (but I rather like their appearance). *Quote for the Day* will separate the two parts of the quotation, print the body of the quotation in a large font, and the author's name in a smaller font, justified to the right margin.

*Quote for the Day* will treat the quotation so that word-wrapping is automatically done. You don't (in fact, can't) insert any of your own carriage returns anywhere into the quotation. You can force a line-break by inserting a vertical-bar character where you want the line to break. For example,

```
Glendower: "I can call the spirits from the vasty deep."|Hotspur: "Why, so  
can... (and so on)
```

---

will cause the word *Hotspur* to start on a new line. In this way, you may control how lines break, say for a poem.

Quotation marks and apostrophes are also treated so that they become sexed for a nice appearance. The database need only use ordinary ASCII quote and apostrophe characters--the kind that appear on your keyboard. *Quote for the Day* will do a pretty good job making them look correct.

# WIN.INI

*Quote for the Day* creates and uses a section in the WIN.INI called **[Gravesend Quotes]** to store information between sessions. The following variables are used:

- Minutes=** The number of minutes to wait until performing some action (as specified by **Action**, below). If not present in the file, this defaults to 1440 (one day). This number cannot be negative. Zero represents approximately 10 seconds. This variable can be changed in the Options dialog.
- Action=** Indicates the desired action to be undertaken after the time specified by the Minutes variable above.  
1 = Pick a new quotation  
2 = Minimize the window to an icon  
4 = Close *Quote for the Day*.  
If this variable is not present, 1 (pick a new quotation) is assumed. This variable can be set in the Options dialog.
- QuoteFile=** Names the quotation database to use. This variable can be set in the Options dialog. If this variable is not present, the file named **QUOTE.DAT** in the Windows sub-directory is assumed.
- WindowX=** Contains the horizontal position of the window. This variable is only present if the window has been moved.
- WindowY=** Contains the vertical position of the window. This variable is only present if the window has been moved.
-

# Commentary

*"Be not so bigoted to any custom as to worship it at the expense of Truth."*

*- Johann Georg Von Zimmermann*



here's no agenda for the quotes that I've included in the quote database. No ulterior motive. Some quotes appear because I thought they were useful little morsels, others I included because they illustrate some characteristic--for better or worse--about the speaker. Some border on the verge of nonsense, just to keep things light.



I do believe, however, that censorship is wrong, and anything that abridges knowledge is an evil. For this reason, it is my sincerest hope that you do not remove quotations from the database; only add to it. If you find something that offends you, or attacks your values, so be it. Truth, by its very nature, will prevail over any onslaught, so if what you believe in is the Truth, you have nothing to fear. He that says Truth is fragile is the greatest of liars, and the greatest of cowards.

*"Truth is a flower that blooms best in a weed-patch of diversity, wherein can be seen its beauty"*

# Installing *Quote for the Day*

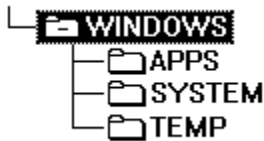
"I do not fear computers. I fear the lack of them."

- Isaac Asimov.

In general, if you put everything in the Windows sub-directory, things should be fine. If you want to, you can create a separate sub-directory and place everything there, but then you *must* be sure to include that sub-directory in your DOS **PATH** environment variable.



For example, you can create a directory **C:\QUOTE** and copy all of the *Quote for the Day* files there, but you must then be sure that your AUTOEXEC.BAT contains a line like **SET PATH=C:\QUOTE;....** (Note: I won't suggest that it needs to be the first thing mentioned in the **PATH** variable, just so long as it's included.)



An alternative way to install *Quote for the Day*, (and this is what I have done) is to create a sub-directory called APPS that is in the Windows directory; this contains all those interesting little applications that just don't justify their own directory. It's a simple matter to include that in the **PATH** variable; in my case, it's

**SET PATH=F:\WINDOWS;F:\WINDOWS\APPS;....**

If you want to have *Quote for the Day* pop up each time you start Windows, you will need to edit WIN.INI. A handy tool for this is SysEdit, though *Notepad* or any other text editor will work. At the beginning of the file is a section called **[windows]**, and one of the lines in it should read **load=**. Just insert **QUOTE.EXE** at the beginning of the list, and it will pop up with a random quote when windows is started.



If you aren't already loading applications, you can modify your WIN.INI to automatically load *Quote for the Day* with the following line:

**load=QUOTE.EXE**



If you do have other applications loading, put **QUOTE.EXE** first in the list, so that it is the first application on the screen (it doesn't have to be first, but you probably want to have it appear early in your start-up.) For example:

**load=QUOTE.EXE,CLOCK.EXE,MYCAL.CAL,WINFILE.EXE**



This will load *Quote for the Day*, then the Windows Clock program, Windows Calendar (which loads **MYCAL.CAL** by means of the association that exists with all **.CAL** files), and finally the File Manager.

---

## Do you know about SysEdit?

**SysEdit** is a little utility that comes with Windows, but not everybody knows about it. The folks at Microsoft, for some reason, decided not to advertise the existence of this utility, (probably because it's not as polished as they would like it) but in spite of all, it's a useful little application. It's a NotePad-like tool that automatically pulls up **AUTOEXEC.BAT**, **CONFIG.SYS**, **WIN.INI**, and **SYSTEM.INI** into four MDI windows. You can edit these as if you were using Notepad, and then save them.

You can find **SysEdit** in your \WINDOWS\SYSTEM directory (along with some other unadvertised goodies). If you want, you can create an Icon for it in the Program Manager; just use the **File New** option to create a program item, and then use the **Browse** button to look into the **[system]** directory. Look for a file called SYSEDIT.EXE.

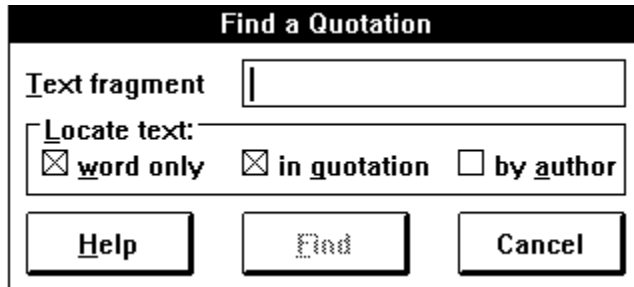
# Finding Quotations

## The *Find* Dialog

*“Serendipity is looking in a haystack for a needle and discovering the Farmer’s Daughter.”*

*- Julius H. Comroe.*

You can find specific quotations in the database by specifying a fragment of text that appears in it, either within the body of the quotation itself, or as part of the author’s name. This is done using the **Find Quote...** dialog available in the menu.



The screenshot shows a dialog box titled "Find a Quotation". It has a text input field labeled "Text fragment". Below it is a section labeled "Locate text:" containing three checkboxes: "word only" (checked), "in quotation" (checked), and "by author" (unchecked). At the bottom of the dialog are three buttons: "Help", "Find", and "Cancel".

**Text fragment:** This allows you to specify what you want to look for; it can be up to 60 characters long. Case is ignored; whatever you type will be upshifted. This text can be one or more words; how *Quote for the Day* treats this field is indicated by the **Locate text** options below. This edit box must contain something in order for the **Find** button to be active.

**Locate text:** Indicates how *Quote for the Day* is to look for the text specified above; these check boxes operate independently of each other, so all or some of them can be on. Either **in quotation** or **by author** must be checked in order for the **Find** button to be active, however.

**...word only:** If this box is checked, *Quote for the Day* will find only those quotations where the text indicated consists of whole words, and not part of larger words. If this box is not checked, any quotations containing the text fragment--whether it is embedded in larger words or not--will be located.

**...in quotation:** Indicates whether the quotation is to be examined for the text in question.


**...by author:** Indicates whether the author’s name is to be examined for the text in question.

**Help:** Invokes this help screen.

**Find (next):** Begins or continues the find operation. Initially, this button will read **Find**, and causes the search to start from the top of the database. Subsequently, it will read **Find next**, and continue the search from the position of the previous find. If the contents of the **Text fragment** box is changed, the button will revert to **Find**, and the search will begin at the top again. The **Text fragment** box must not be empty, and either **in quotation** or **by author** must be checked in order for this button to be active.

**Cancel:** This button cancels any changes made in the dialog, and cancels any ongoing search.

---

While a search is in progress, *Quote for the Day* can be minimized using the  button that appears in the upper right corner of the window. When a quotation is found, *Quote for the Day* will restore itself and display the found quotation. In this way, if you are

looking for a quotation to include in a document you are writing, you can send *Quote for the Day* off to find the quotation while you continue writing.



To look up a quotation that contains the word *transform*, type those letters in the **Text Fragment** box and then make sure that the **in quotation** box is checked. Then click on the **Find** button to begin the search.



To look up a quotation by Mark Twain, type **MARK TWAIN** in the edit box. Then make sure that the **in quotation** box is unchecked and the **by author** box is checked. Click on the **Find** button to begin the search.



To look for the name *Jane Austin* occurring in a quotation, and any quotation by her, type her name into the edit box, and make sure that both the **in quotation** and **by author** boxes are checked, and then begin the search.



To find the word *art*, but not the word *artist*, *artistic*, or any other word with the three letters 'art' in it, type those three letters into the edit box and make sure the **word only** box is checked before beginning the search.



If *Quote for the Day* doesn't find the quote you had in mind, select the **Find Quote...** option again and press the Enter key (or click on the **Find Next** button); this will continue the search, using the same options as before, picking up the search from the current quotation.

---

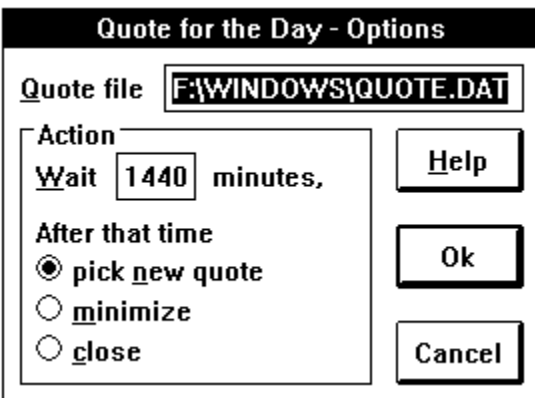
# Configuring Quote for the Day

## The Options Dialog

*“Take from me the hope that I can change the future and you will send me mad.”*

- Israel Zangwill

*Quote for the Day* can be set up to behave in any of several different ways, depending on what you want to use it for. Typically, you will have installed it to load when Windows is started, but what do you want it to do then? By default, it will stay on the screen, and in twenty-four hours, it will pick a new quotation. It can be set up to wait less time before picking a new fortune, or it can be told to take some other action at the appointed time, such as minimizing or closing down. These settings can be set by using the **Options...** dialog available in the menu.



- Quote file:** This names the file that will be accessed to extract quotations. Initially, *Quote for the Day* assumes that it is named **QUOTE.DAT**, and that it can be found in the Windows sub-directory.
- Wait ... minutes:** This determines how long to wait, in minutes, before *Quote for the Day* takes some form of action, as described below. Initially, this is 1440 minutes (24 hours.) The number cannot be negative (if it is, its absolute value is used) and if it is zero, *Quote for the Day* will wait ten seconds before taking action.
- After that time:** When the allotted time has passed, this group of buttons determines what action is to be taken. The buttons are mutually exclusive, so only one can be chosen at one time.
- ...pick new quote:** A new quotation is randomly chosen. This is the same as using the **New Quote** from the menu. This process will repeat until the application is ended, or a new action is chosen. This is also the default action when *Quote for the Day* is first installed.
- ...minimize:** *Quote for the Day* is minimized to an icon after the allotted time. It can be restored in the usual way thereafter, though it will continue to minimize until another action is chosen.
- ...close:** After the indicated time, *Quote for the Day* will close, and must be launched by usual means in order to run again.
- Help:** Invokes this help screen.
- Ok:** Accepts the settings as they are entered, making them permanent (until set again by this dialog, or editing WIN.INI.)
- Cancel:** Cancels all changes made, and restores all settings to what they were before this dialog was invoked.
-



To have *Quote for the Day* choose a new quotation every fifteen minutes, enter **15** in the **Wait ... minutes** edit box, and make sure that **pick new quote** is selected before pressing the **Ok** button.



If you only want to show a random quotation when loading Windows, and have it then disappear after ten seconds, type **0** in the **Wait ... minutes** box and select the **close** button before pressing the **Ok** button.

# What's Shareware?

*"In spite of everything I still believe that people are really good at heart."*

---

*- Anne Frank*

This is a marketing concept that gives you the ability to 'try before you buy'. You can get Shareware programs from a number of sources, such as bulletin boards, software distributors, commercial on-line systems, and so on. You may then 'kick the tires and slam the doors' to see if the program meets your needs. If you like it, you buy it. This is called 'registering' the program.

Shareware relies on the honor system (and if that fails, the guilt system!) Please register your shareware programs! Only by your support do Shareware authors find it worth while to continue developing their programs.

# Registering

*"The best measure of a man's honesty isn't his income tax return. It's the zero adjust on his bathroom scale."*

*- Arthur C. Clarke*

If you use *Quote for the Day* for a period of longer than thirty days, you are expected to pay for it. This can be done by printing the invoice (using Windows Help's built-in *Print Topic* feature in the *File* menu), filling it out, and sending it along with a payment to the address indicated. The modest price of \$8.00 rewards many hours of long work, and many years of collecting quotations, and will allow further development of the program. Shareware only works because of your honesty.



## INVOICE

**Remit to:**

Thomas Tuerke  
"Quote For The Day"  
441 San Carlos Way  
Novato, CA 94945

**From:**

---

---

---

---

**Contact:**

---

---

Please register me for (qty)\_\_\_\_\_ copies of *Quote for the Day*. Enclosed is payment of \$8.00 US per copy being registered. I understand that *Quote for the Day* software has already been delivered, and registration entitles me to continue using the product. A total of (\$8.00 x qty) \$\_\_\_\_\_ has been enclosed with this invoice.

---

Please take a moment to answer a few brief questions:

I am interested in expanding my database of quotations. Topics that interest me include:

I heard about/received *Quote for the Day* from:

- A friend  
 BBS (please give the name, number, and baud rate supported:\_\_\_\_\_)  
 On-line service (CompuServe, etc.)  
 Shareware distributor  
 Other:

The version of *Quote for the Day* (as reported by the About... dialog) is:



My opinion of *Quote for the Day* is:



A feature I would like to see in *Quote for the Day* is:



Other Comments:

Thank you!

## Sexed Quotes?



DOS machines (and most typewriters, for that matter) treat opening and closing quotes as the same character. But if you look at most typeset text, you will notice that the opening quotation mark is different than the closing quotation mark.

*Quote for the Day* will convert ordinary 'ungendered' quotation marks into sexed quotes (and it will also convert apostrophes, too) so that they have that professional appearance. This is especially useful if you decide to copy a quotation into a document you are writing.

The logic that formats the quotes and apostrophes causes double quote characters to be alternately open and closed sexed quotes, so "Hi" will appear as "Hi" upon the screen. Nesting double quotes isn't possible; you'll have to manufacture imitation double-quotes by using the ` and ' characters: "He said `hi" (or "hi") to Sue.", but for the most part, you probably wouldn't want to put double quotes within double quotes anyway. Double-quote characters appearing immediately after a digit remain double-ticks.

Apostrophes are a little more involved. Those that appear immediately before spaces are converted to opening single quotes. Those that follow non-numeric characters are converted to closing single quotes (this is adequate for uses of apostrophes like *O'doule*, *it's*, as well as closing quotations.) Apostrophes appearing after digits remain single ticks.

